

APPLICANT PROJECT PROPOSAL

Please use Adobe Reader to fill in this form which is free and available online at <http://get.adobe.com/reader/>
PLEASE DOWNLOAD AND SAVE THIS PDF TO YOUR COMPUTER PRIOR TO COMPLETING.

PROJECT SUMMARY

Project Title	
Project Lead #1	
Name	Title
Name of Institution	Name of AFP Governance Organization
Contact Email	
Project Lead #2 (optional)	
Name	Title
Name of Institution	Name of AFP Governance Organization
Contact Email	

Medical, Parental or Maternity Leave
Please inform us if the Project Lead or Co-Lead will be taking leave.
If, during the course of your Project Term, you are provided with a leave from clinical duties by your institution, please fill out a G4 form found at IFPOC.org and submit it to your Governance Organization.

Is there a significant information technology component to this project?

Yes No

If you answered yes, please inform your CIO to obtain advice and support of your IT needs.

PATENTS, TITLES, COMMERCIAL OWNERSHIP

Does this project/innovation have the possibility to result in a patent, title of ownership?

Yes No

If YES – please elaborate on who will own the patent or title, and explain how potential for conflict of interest will be mitigated. – maximum 1000 characters including spaces

Are any of the team members involved in the design or sale of a product that will be used in testing an innovation?

Yes No

If YES – please elaborate on how potential for conflict of interest within the project will be mitigated. – maximum 1000 characters including spaces

PLAIN LANGUAGE ABSTRACT

Please describe the proposed project using non-technical language emphasizing the research question and its importance to health care delivery. If you receive the award, **this summary description will be posted on the IFPOC public website and will be included in press releases.** Ensure that your description can be understood outside your research field. – maximum 1250 characters including spaces

What is the innovation and main question or hypothesis for this proposal? – maximum 1250 characters including spaces

Please describe how this project will influence the healthcare system or influence patient care? – maximum 1250 characters including spaces

Please describe your knowledge translation plan for the results of this project (how will you share/ disseminate your results and/or spread your innovation)? – maximum 1250 characters including spaces

Project Duration

1 Year 2 Years

Project Funding Details

Year 1	Year 2 (if applicable)	Total Amount
\$	\$	\$

Is this Project Proposal a continuation of a previous Innovation Funded project?

Yes No

If YES: please provide the Year and/or Project Code, Title and Project Lead(s) for the previous IF project.

Year	Title	Project Lead(s)

Is this project coordinated with another AFP Innovation Fund project?

Yes No

If YES, please insert Title of Project, Project Lead, and Affiliated Institution as well as Project Code (if known).

Title	Project Lead	Affiliated Institution	Project Code

Is this Project Proposal dependent on another AFP IF project?			
Yes		No	
If YES, please insert Title of Project, Project Lead, and Affiliated Institution as well as Project Code (if known).			
Title	Project Lead	Affiliated Institution	Project Code

If the other applicants are unsuccessful, can this project stand alone?		
Yes		No
Will this project receive funding from any other source than the IF? – including cash or in-kind contributions?		
Yes		No
If answered YES, please specify by source and amount anticipated or already committed:		
Source	Amount	Anticipated or Committed
	\$	
	\$	
	\$	
	\$	
	\$	

PROJECT KEYWORDS

Please select five codes for keywords to describe your project, in order of importance, from among the focus (code 1000), methodology (code 2000) and outcomes (code 3000) selections listed on the Project Database Keywords List pages 6 – 8 that follow (unfortunately we have not been able to provide drop down menus)

1.	
2.	
3.	
4.	
5.	

PROJECT DATABASE KEYWORDS LIST

1000: Project Focus		2000: Project Methodology		3000: Project Projected Outcomes	
1101	Aboriginal Health	2101	Basic Science experimentation	3101	Advocacy
1102	Acquired Brain Injury	2102	Before-After Cohort Study	3102	Better Caregiver Health
1103	Addictions	2103	Best Practices for Lay Education	3103	Change Healthcare Worker Behaviour
1104	Advance Care Planning	2104	Case Study	3104	Change Patient Behaviour
1105	Adverse Drug Response	2105	Clinical Decision Rules	3105	Change Patient Care
1106	Adverse Event Detection	2106	Clinical Practice Guideline	3106	Change Patient Provider Relations
1107	Aging/Geriatrics	2107	Clinical Psychopharmacology	3107	Change Physician Behaviour
1108	Alzheimer's Disease	2108	Clinical Trial	3108	Change Physician-Nurse Relations
1109	Anaesthesia	2109	Cohort Study	3109	Change Physician-Specialist Relations
1110	Anticoagulants/Thromboembolism	2110	Crash Investigations	3110	Change Screening/Diagnostic Practice
1111	Anxiety Disorders	2111	Critical Appraisal	3111	Change Team Behaviour
1112	Aortic Diseases	2112	Cross-Sectional Study	3112	Chronic Disease Prevention and Management
1113	Arrhythmias	2113	Curriculum Development	3113	Cost Savings
1114	Arthritis	2114	Delphi Survey	3114	Create a Novel Intervention for Alzheimer's disease
1115	Asthma	2115	Descriptive Study	3115	Create Guidelines and Best Practices
1116	Bladder Cancer	2116	Diagnostics Evaluation	3116	Creating Culture of Innovation Workplace Wellness
1117	Breast Cancer	2117	Emergent Design	3117	Creation of a Treatment Manual
1118	Cardiac Arrest	2118	Epidemiology	3118	Decrease Drug Use
1119	Cardiomyopathy/Myocarditis	2119	Ergometrics	3119	Decrease Work Absence/burden of M illness
1120	Cardiovascular Diseases	2120	Ethics	3120	Determine New Treatment Paradigms
1121	Cerebral Palsy	2121	Evaluation	3121	Develop Electronic Health Records
1122	Child Health	2122	Evidence-Based Medicine	3122	Develop Remote Acute Care
1123	Chronic disease	2123	Experiment	3123	Develop Scalable Model of Care for Spread
1124	Chronic Myofascial Pain	2124	Feasibility Study	3124	Develop Systems of Patient Flow
1125	Chronic Obstructive Pulmonary Disease	2125	fMRI	3125	Development of Toolkit
1126	Chronic Post-Sternotomy Pain	2126	Genetics/ Next-generation Sequencing	3126	Empower Youth in their Transition into Adulthood
1127	Chronic Rhinosinusitis	2127	Guideline Development	3127	Encourage Knowledge Transfer
1128	Clinical Pharmacology & Therapeutics	2128	Health Care Delivery	3128	Enhance Access to Care
1129	Cognition	2129	Health Economics	3129	Evidence-Based Therapy
1130	Colorectal Cancer	2130	Health Literacy	3130	Expand Service capacity
1131	Community Health Care	2131	Health Policy	3131	Feasibility
1132	Complex Care	2132	Health Services Research Applied Methods	3132	Follow-up Large-Scale Studies
1133	Complex Continuing Care	2133	Health Technology Assessment	3133	Geriatric Mental Health Networking
1134	Concussion	2134	Hospital-community collaboration	3134	Identify Genetic Variants, Repeats, Deletions, and Copy Number Risk Variants to Anorexia Nervosa re Weight Loss
1135	Congenital Malformation	2135	Human Factors	3135	Implement Guidelines and Best Practices
1136	Continuing Medical Education	2136	Information Technology	3136	Improve Advance Care Planning
1271	COVID-19	2137	Instructional Design	3137	Improve Continuity of Care
1137	Crisis Resource Management	2138	Interprofessional Health Care	3138	Improve Hospital Ecosystem
1138	Critical Care	2139	Interprofessional Education and Training	3139	Improve Interest in the Care of Seniors
1139	Cystic Fibrosis	2140	Interrupted Time Series Design	3140	Improve Medical Education
1140	Dementia	2141	Intervention Study	3141	Improve Number of Providers in the Care of the Elderly
1141	Dermatology	2142	Key Stakeholder Meeting		
1142	Diabetes	2143	Knowledge Assessment		
1143	Dialysis	2144	Knowledge Translation		
1144	Diet Nutrition Exercise	2145	Laboratory Analysis		
1145	Early Illness Intervention	2146	Longitudinal Study		
1146	Eating Disorders	2147	Management Sciences		
1147	Economics	2148	Medical Education & Training		
1148	Education and Training	2149	Meta Analysis		
1149	Emergency Medicine	2150	Mixed-methods		
1150	Endocrinology	2151	Molecular diagnostics/prognostics		
1151	Ethnicity	2152	Narrative		
1152	Fertility	2153	Needs Assessment		
1153	Fetal Ultrasound	2154	Observational Study		
1154	Gastroenterology	2155	Outcomes Research		
1155	General Internal Medicine	2156	Participatory Action Research		
1156	Genetics				

1157	GI and Oncology
1158	Global Health
1159	Haematology
1160	Head and Neck
1161	Health Care Provider
1162	Health Informatics
1163	Health Systems Research
1164	Hearing Loss
1165	HIV/AIDS
1166	Hypertension
1167	Hypertonicity/Spasticity Management
1168	Imaging/Ultrasound
1169	Immunology
1170	Infection Control
1171	Infectious Diseases
1172	Influenza
1173	Information Technology
1174	Injury Prevention
1175	Inpatient Medicine
1176	Institution Integration
1177	Internal Medicine
1178	Kidney Diseases
1179	Laboratory Medicine
1180	Laparoscopic Surgery
1181	Leukemia/Lymphoma
1182	Lipid Disorders
1183	Liver Disease
1184	Long Term Ventilation
1185	Long-term Care
1186	Male Health
1187	Maternal Child Program
1188	Medical Ethics
1189	Medical Imaging
1190	Mental Health
1191	Microbiology
1192	Migraine
1193	Minimally Invasive Surgery
1194	Multiple Sclerosis
1195	Musculoskeletal health
1196	Myocardial Infarction
1197	Neonatal Medicine
1198	Neurogenetics
1199	Neurological Disease
1200	Neuromuscular Disease
1201	Neurosurgery
1202	Newborn Screening
1203	Nosocomial Infection
1204	Nursing
1205	Obesity
1206	Obstetrics/Gynecology
1207	Occupational Disease
1208	Oncology
1209	Opioid Management
1210	Ophthalmology
1211	Orthopaedic
1212	Osteoporosis/Bone Disease
1213	Otolaryngology
1214	Outpatients Services
1215	Outreach
1216	Pain and Palliative Care
1217	Parkinson's Disease
1218	Patient Education
1219	Patient Engagement
2157	Patient Education
2158	Patient Workshops
2159	Pilot Study
2160	Pre and Post Implementation Study
2161	Prognostic Test Evaluation
2162	Proof-of-principle Study
2163	Prospective Double Cohort
2164	Prospective Observational Study
2165	Prospective Randomized Controlled Trial
2166	Psychology
2167	Psychometrics
2168	Public Education
2169	Public Health
2170	Qualitative Research
2171	Quality and Safety
2172	Quasi-experimental Single-subject AB Research Design Across Multiple Subjects
2173	Questionnaire
2174	Randomized Control Trial
2175	Randomized, Placebo-controlled Trial
2176	Registry/Database
2177	Rehabilitation
2178	Retrospective Cohort
2179	Scoping Review
2180	Self-Assessment
2181	Service Access Enhancement
2182	Shared Care and Best Practice
2183	Simulation
2184	Single Arm Study
2185	Sociology
2186	Statistics, Biometrics and Econometrics
2187	Surgical Simulation
2188	Surveys
2189	Systematic Review
2190	Systematic Review of the Literature
2191	Systems Development
2192	Tool Development
2193	Transdiagnostic Intervention
2194	Transformative Pathology
2195	Translational Research Trials
2196	Trials
2197	Usability Study
2198	Video Creation
2199	Web-based Tool
3142	Improve Occupational Safety
3143	Improve Patient Outcomes
3144	Improve Patient Safety
3145	Improve Patient Satisfaction
3146	Improve Patient-Physician Relations
3147	Improve Patient's Quality of Decision Making
3148	Improve Physician Abilities
3149	Improve Quality of Care
3150	Improve Quality of Life
3151	Improve Resource Allocation
3152	Improve Training and Training Programs
3153	Improve Value for Money
3154	Improved Knowledge and Skill Retention
3155	Improved Pain Management
3156	Improved Patient Engagement
3157	Improvement in Return to Work
3158	Increase Access and Service for Ethnic Minorities
3159	Increase Clinical Trial Accrual
3160	Increase Remote Access to Care
3161	Increase Work in Aboriginal Health
3162	Inform Basic Science
3163	Inform the Design of Randomized Controlled Trials
3164	Information Technology
3165	Injury Prevention Education
3166	Knowledge Translation
3167	Leverage Resource
3168	Medical Testing
3169	Medical Treatment
3170	Multimorbidity
3171	Novel Therapeutic Development
3172	Objective Evidence of Surgical Competence
3173	Offer Better Detection Rate
3174	Patient Education
3175	Personalized Treatment
3176	Pilot for a Large Future RCT
3177	Primary Prevention
3178	Promote Collaboration
3179	Promote Efficient Delivery of Health Care Resources
3180	Promote Greater Professionalism in r/s btw physicians and others
3181	Proof of Principle to Facilitate Larger Phase 3 Studies
3182	Public Education
3183	Quality of Recovery
3184	Reduce Decisional Conflict with Complex Medical Decision-Making
3185	Reduce Side Effects
3186	Reduce Work-Related Surgery
3187	Response to Patient Concerns
3188	Revolutionize Medical Documentation by introducing "Document Driven Processing"
3189	Short Term Clinical Outcomes
3190	Standardization of Practice
3191	Support Patient Self-Care
3192	Support Relevant CPD

1220	Patient Flow
1221	Patient Safety
1222	Patient Satisfaction
1223	Patient Wait-times & The Triage System
1224	Perioperative Care
1225	Personalized Medicine
1226	Postoperative Pain Management
1227	Pre-hospital Care
1228	Prevention
1229	Preventive Medicine
1230	Primary Care
1231	Prostate Disease
1232	Public Health
1233	Pulmonary Disease
1234	Quality Improvement
1235	Radiology
1236	Rehabilitation
1237	Rheumatic Disease
1240	Risk Management
1241	Screening
1242	Sexuality
1243	Shared Decision-Making
1244	Simulation
1245	Sleep Apnea
1246	Social Work
1247	Spinal Cord Injury
1248	Sports Medicine
1249	Stroke
1250	Supportive Care
1251	Surgery
1252	Swine Flu
1253	Tech-based Treatment
1254	Telemedicine
1255	Thyroid Cancer
1256	Transfusion medicine
1257	Transitions in Care
1258	Transplantation
1259	Trauma
1260	Tuberculosis
1261	Upper Airways Disease
1262	Urology
1263	Vaccines
1264	Vascular
1265	Viral Diseases
1266	Vision Care
1267	Weight Gain
1268	Wilderness Medicine
1269	Women's Health
1270	Wound Care

3193	Surgical Skills Development
3194	Target Bottlenecks in Patient Flow
3195	Test a New Treatment
3197	Translate Pilot Research into New Clinical Treatment
3198	Translational Research Study
3200	Virtual Care
3199	Vision Care Policies

PROJECT NARRATIVE PROPOSAL

Background, Objectives, Rationale, Significance, and Justify why the project is innovative – maximum 8,000 characters including spaces (place up to 3000 characters on this page, up to 3000 on page 10 and the balance on page 11) Also include an assessment of expected outcomes.

*For information on how to attach files (diagrams, graphs or images) to this section, view page 21

Background, Objectives, Rationale, Significance, and Justify why the project is innovative – continued

Background, Objectives, Rationale, Significance, and Justify why the project is innovative – continued

Team – maximum 2000 characters including spaces

Please include the names and affiliations of the team members, with a brief statement of their roles, experience (are any early career investigators?), area(s) of expertise, time commitment and planned contributions to the project

Approach and Work Plan – maximum 4000 characters including spaces (up to approx. 3000 characters on this page, and the balance on page 14)

Provide a description of the approach to be used as well as a detailed project work plan.

*For information on how to attach files (diagrams, graphs or images) to this section, view page 21

Approach and Work Plan – Continued.

Timeline – maximum 1300 characters including spaces

Provide a target start date, the dates when each milestone will be completed and the target finishing date for the project

*For information on how to attach files (diagrams, graphs or images) to this section, view page 21

Project Outcome Evaluation Metrics – maximum 2700 characters including spaces

Detail the anticipated outcomes and how these outcomes will be measured. Which measurement will determine success? How will you measure it? What is the expected benefit and how will it be measured? How will the IFPOC determine if the project was successful?

*For information on how to attach files (diagrams, graphs or images) to this section, view page 21

Additional Project Funding (only if applicable) – maximum 2000 characters including spaces

Elaborate on any supplemental funding for the proposed project including the amount and source as well as any contingencies or other special circumstances.

Other Relevant Information (optional) – maximum 2000 characters including spaces

Please elaborate on any other items you think important or relevant to the implementation or outcomes of this project.

*For information on how to attach files (diagrams, graphics or images) to this section, view page 21

Has this Project Proposal been submitted and been unsuccessful in a previous innovation fund competition?

Yes

No

If YES, please provide a detailed response to the specific comments/feedback from reviewer(s) in the past competition – maximum 2000 characters including spaces

List of References and/or Support from Partners (optional) – maximum 8000 characters including spaces (up to 3000 characters on this page, up to 3000 on page 19 and the balance on page 20)

Please provide bibliographic citations or attach any letters of support from partners into this section

*For information on how to attach files (diagrams, graphs or images) to this section, view page 21

List of References and/or Support from Partners (optional) – Continued.

This area is currently blank, intended for listing references and/or support from partners.

List of References and/or Support from Partners (optional) – Continued.

NOAMA REQUIREMENTS

Funding Management

Please provide name and contact information for the transfer payment agency that will manage the project funds below and attach a letter from the transfer payment agency confirming their agreement to manage project funds.

Name of Institute

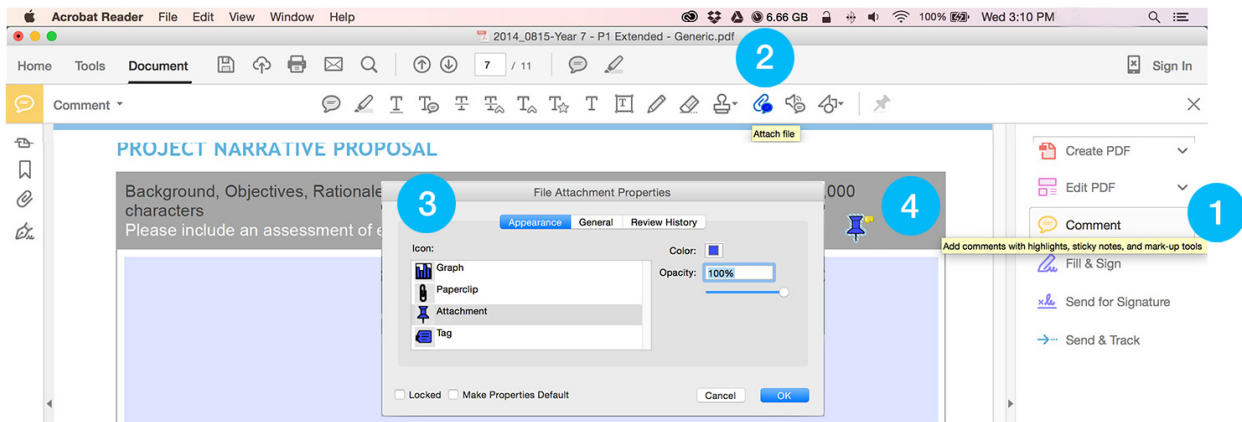
Address

Contact Name

Contact Email

HOW TO ATTACH A FILE TO THIS PDF

 Save the downloaded document as a PDF before attaching file



- 1 Click the “Comment” button on the right side menu to attach file
- 2 Click the “Attach file” button and place it on your document
- 3 Browse and select your file. Click OK.
- 4 Right-click “Attach file” icon to “Save embedded file to disk” or double-click to open